



Snyder County

DRAINS TO STREAM



KEEP IT CLEAN

Stormwater Stenciling



PACD
PENNSYLVANIA ASSOCIATION OF
CONSERVATION DISTRICTS, INC.

Who?

- Lions
- Rotary
- Watershed Groups
- Community Groups
- Scouts
- Environmental Clubs
- Class Projects

Any organization can participate in a stormwater drain stenciling project. Contact the Snyder County Conservation District to receive materials and instructions.



What?

DUMP NO WASTE



DRAINS TO LAKE

PLEASE DON'T POLLUTE!



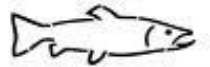
PROTECT OUR WATERSHED

ONLY RAIN



DOWN THE DRAIN

KEEP IT CLEAN



DRAINS TO RIVER

A variety of stencils are available in the stormwater drain stenciling kit. Mix and match them throughout the town to catch the eyes of individuals and send the message home.



**PROTECT
OUR
WATERSHED**

**PROTECT
YOUR
WATER**



For more information or any questions contact the Snyder County Conservation District below. Remember a stormwater drain stenciling project can be a fun and rewarding opportunity to make a difference in your community. Take the opportunity to inform your community about the harm that can be done by dumping into storm drains, and improve your drinking water and your natural resources.



**PROTECT
OUR
WATERSHED**

Snyder County Conservation District
10541 Route 522 Middleburg, PA 17842
Phone: (570) 837-3000 ext. 110
Email: sccd@ptd.net

Financial and other support for this project is provided by the Pennsylvania Association of Conservation Districts, Inc. through a grant from the Pennsylvania Department of Environmental Protection under Section 319 of the Clean Water Act, administered by the U.S. Environmental Protection Agency.

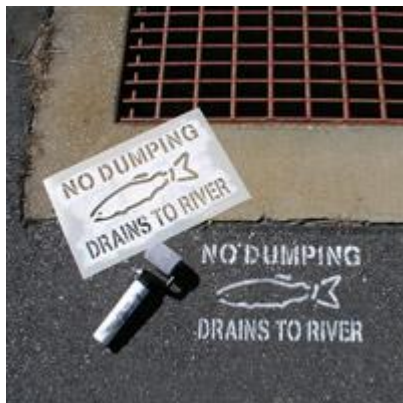
**** We All Live Downstream ****

When?



Pick a nice warm day with little chance of rain, a day that you can enjoy being outside. Too cold and the paint will dry very slow between coats, and obviously rain is your enemy until the stencil dries. Gather a group and enjoy a sunny morning outside and make a difference in your community. Spring is probably the best season so that your stencil will make the greatest impact as people are out in the summer.

Winter salt and plowing will take its toll on the stencil so spring will give you the longest impact before any re-painting is needed.



Where?



Right or Left, Up or Down, In-Front or Behind; location doesn't have to be uniform. Each drain may have its own circumstances that make one location better than another. It may be best to identify the proper location before setting out with the group, often who you ask permission may want to walk with you and identify the locations or make suggestions before the stenciling day.



Why?

The purpose of painting a fish or other animal on the storm drain is to remind residents, youth and visitors to a community, that whatever goes into that storm drain does not just disappear, but will continue into the environment affecting all life, human and otherwise, in that area. Visitors that notice the stenciled message will learn about the importance of stormwater runoff and how our community cares for the environment. Some may even take this knowledge back to their community and do a stenciling program in their town.

Stormwater can contain many types of pollution such as sediment, chemicals and animal waste. Eroded soil and road cinders (sediment) from nearby lawns, roads and excavation sites are examples of non-point source pollution that originally come from a broad area and enter our waterways. People dumping paints, chemicals or cleaners directly into the storm drain are examples of point source pollution, a problem in which pollutants are directly discharged into a water carrying device or stream.

Many people are unaware that storm drains carry stormwater to the nearest waterway, often without any kind of filtration or treatment. For example, a local waterway here may be a small creek or ditch, but that creek eventually will connect to a larger stream or river, which eventually will drain into the Chesapeake Bay and the Atlantic Ocean. Many of us obtain our drinking water from streams, creeks and rivers, so eventually, we are drinking the same water that at one time fell as rain and drained off of our neighborhood streets through storm drains. The debris and chemicals that are carried by the water flowing through storm drains can pollute our water supply and also threaten aquatic life living within the water bodies. It our responsibility to let only rain enter storm drains.

How?

- Request information from the conservation district contact listed on the back of the pamphlet.
- Obtain permission from local government for stenciling project. I.e. borough, township, state, etc.
- Schedule date and recruit help.
- Remember safety. Use cones, vests, gloves, and goggles at all times.
- Clean the surface to be stenciled; use wire brushes and brooms to clean the surface to be painted.
- Apply stencil and secure it to the painted area, be sure to mask off areas for overspray, and be aware of surrounding homes, cars and other personal property.
- Apply paint to the stencil in several thin coats for best benefit. This works better than one heavy coat and minimizes runs.
- Clean-up area before leaving.

